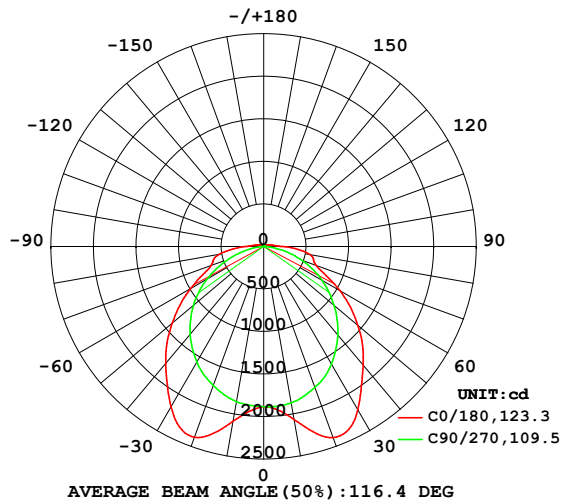


LUMINAIRE PHOTOMETRIC TEST REPORT

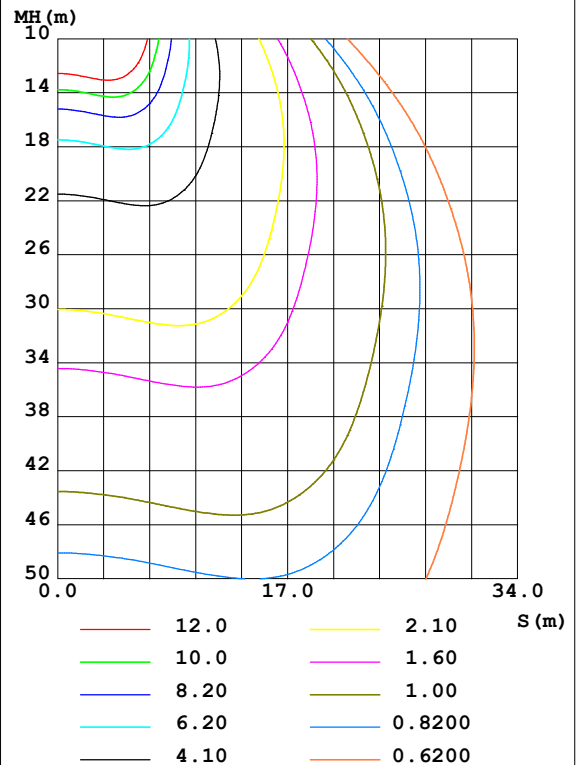
Test:U:230.0V I:0.2355A P:48.23W PF:0.8903 Freq:49.99Hz Lamp Flux:7010.45x1 lm		
NAME: LED Waterproof Luminaire	TYPE:Trent III-5FT-48W-CCT-40K	WEIGHT:
SPEC.:48W	DIM.: 1570*99*82mm	SERIAL No.:
MFR.: Kosnic	SUR.:1570*99mm	Shielding Angle:

DATA OF LAMP		PHOTOMETRIC DATA Eff: 145.37 lm/W			
MODEL	Trent III-5FT-48W-CCT-40K	Imax(cd)	2399	S/MH(C0/180)	1.53
NOMINAL POWER(W)	48	LOR(%)	100.0	S/MH(C90/270)	1.24
RATED VOLTAGE(V)	230	TOTAL FLUX(lm)	7010.4	η UP,DN(C0-180)	1.5,49.3
NOMINAL FLUX(lm)	7010.45	CIE CLASS	DIRECT	η UP,DN(C180-360)	1.4,47.9
LAMPS INSIDE	1	η up(%)	2.9	CIBSE SHR NOM	1.50
TEST VOLTAGE(V)	230	η down(%)	97.1	CIBSE SHR MAX	1.50

LUMINOUS INTENSITY DISTRIBUTION DIAGRAM



C0 PLANE ISOLUX DIAGRAM (UNIT:lx)



C Range: 0 - 360DEG
C Interval: 22.5DEG
Test Speed: HIGH
Temperature: 25.3DEG
Operators: 01
Test Date: 2023-08-20

γ Range: 0 - 180DEG
 γ Interval: 1.0DEG
Test System: EVERFINE GO-2000A_V1 SYSTEM V2.0.354
Humidity: 65.0%
Test Distance: 9.137m [K=1.0000]
Remarks:

ZONAL FLUX DIAGRAM

ZONAL FLUX DIAGRAM:

γ	C0	C45	C90	C135	C180	C225	C270	C315	γ	Φ zone	Φ total	%lum, lamp
10	2065	1968	1867	1999	2088	1988	1852	1946	0- 10	184.3	184.3	2.63,2.63
20	2389	2163	1763	2188	2387	2175	1737	2117	10- 20	583.4	767.7	11,11
30	2215	2223	1596	2199	2179	2164	1571	2170	20- 30	971.4	1739	24.8,24.8
40	1822	1954	1358	1901	1795	1841	1346	1898	30- 40	1192	2931	41.8,41.8
50	1448	1513	1082	1456	1404	1398	1079	1468	40- 50	1215	4146	59.1,59.1
60	1033	1041	789.4	991.6	996.8	953.0	769.3	1003	50- 60	1055	5201	74.2,74.2
70	657.3	691.2	477.7	651.1	657.8	624.8	442.3	665.7	60- 70	781.7	5983	85.3,85.3
80	553.3	410.0	174.2	395.6	528.5	390.0	141.3	398.7	70- 80	523.3	6506	92.8,92.8
90	228.2	252.2	7.077	224.7	218.4	211.8	5.786	226.4	80- 90	304.1	6810	97.1,97.1
100	98.29	99.25	6.214	89.25	99.29	86.25	3.945	91.58	90-100	122.7	6933	98.9,98.9
110	55.91	43.46	6.382	38.40	55.77	36.89	5.442	38.88	100-110	51.33	6985	99.6,99.6
120	34.01	20.35	6.411	17.06	33.86	16.43	5.936	15.40	110-120	25.04	7010	100,100
130	0	0	0	0	0	0	0	0	120-130	0.9001	7010	100,100
140	0	0	0	0	0	0	0	0	130-140	0	7010	100,100
150	0	0	0	0	0	0	0	0	140-150	0	7010	100,100
160	0	0	0	0	0	0	0	0	150-160	0	7010	100,100
170	0	0	0	0	0	0	0	0	160-170	0	7010	100,100
180	0	0	0	0	0	0	0	0	170-180	0	7010	100,100
DEG	LUMINOUS INTENSITY:cd									UNIT:lm		

Conical surface Flux(90deg): 3547.7 lm

%lum = 50.6%

%lamp = 50.6%

Conical surface Flux(120deg): 5201.3 lm

%lum = 74.2%

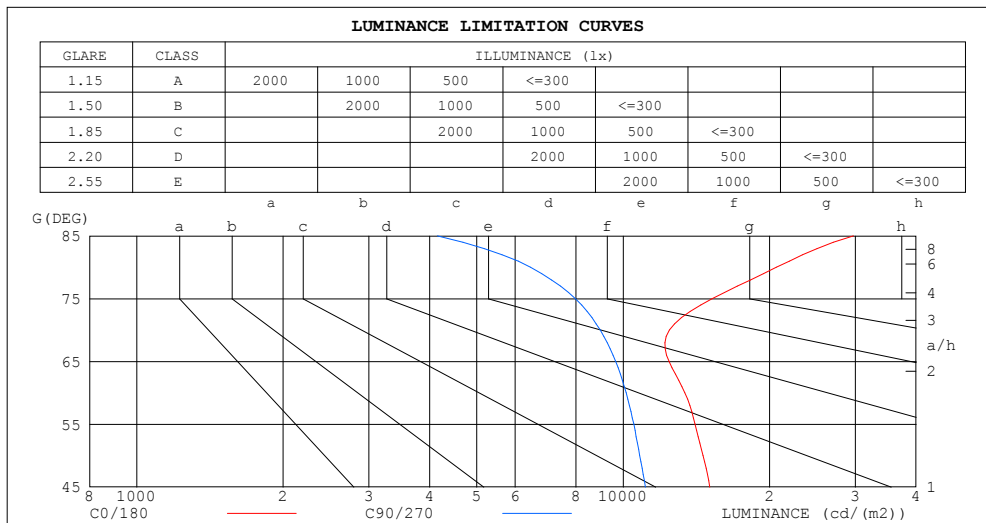
%lamp = 74.2%

C Range: 0 - 360DEG
 C Interval: 22.5DEG
 Test Speed: HIGH
 Temperature:25.3DEG
 Operators:01
 Test Date:2023-08-20

γ Range: 0 - 180DEG
 γ Interval: 1.0DEG
 Test System:EVERFINE GO-2000A_V1 SYSTEM V2.0.354
 Humidity:65.0%
 Test Distance:9.137m [K=1.0000]
 Remarks:

LUMINANCE LIMITATION CURVES

Test:U:230.0V I:0.2355A P:48.23W PF:0.8903 Freq:49.99Hz Lamp Flux:7010.45x1 lm		
NAME: LED Waterproof Luminaire	TYPE:Trent III-5FT-48W-CCT-4000K	HEIGHT:
SPEC.:48W	DIM.: 1570*99*82mm	SERIAL No.:
MFR.: Kosnic	SUR.:1570*99mm	Shielding Angle:



LUMINANCE cd/(m2)		
G (DEG)	C0/180	C90/270
85	29754	4149
80	20647	6448
75	15238	7976
70	12452	8974
65	12425	9652
60	13391	10145
55	14059	10513
50	14594	10812
45	15067	11109

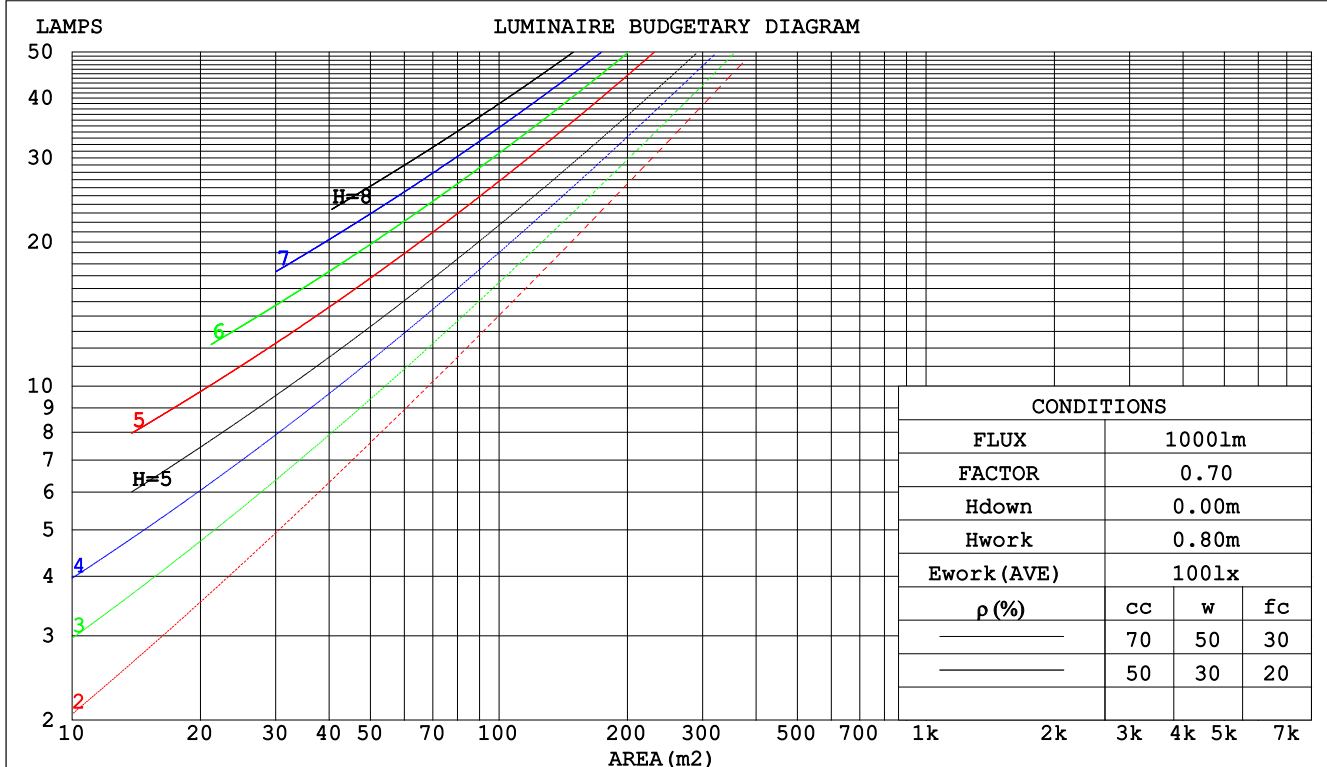
C Range: 0 - 360DEG
C Interval: 22.5DEG
Test Speed: HIGH
Temperature:25.3DEG
Operators:01
Test Date:2023-08-20

γ Range: 0 - 180DEG
γ Interval: 1.0DEG
Test System:EVERFINE GO-2000A_V1 SYSTEM V2.0.354
Humidity:65.0%
Test Distance:9.137m [K=1.0000]
Remarks:

CU AND LUMINAIRE BUDGETARY ESTIMATE DIAGRAM

Test:U:230.0V I:0.2355A P:48.23W PF:0.8903 Freq:49.99Hz Lamp Flux:7010.45x1 lm		
NAME: LED Waterproof Luminaire	TYPE:Trent III-5FT-48W-CCT-4000K	WEIGHT:
SPEC.:48W	DIM.: 1570*99*82mm	SERIAL No.:
MFR.: Kosnic	SUR.:1570*99mm	Shielding Angle:

pcc	80%			70%			50%			30%			10%			0
pw	50%	30%	10%	50%	30%	10%	50%	30%	10%	50%	30%	10%	50%	30%	10%	0
pfc	20%			20%			20%			20%			20%			0
RCR	RCR:Room Cavity Ratio						Coefficients of Utilization(CU)									
0.0	1.18	1.18	1.18	1.15	1.15	1.15	1.10	1.10	1.10	1.04	1.04	1.04	.99	.99	.99	.97
1.0	1.02	.97	.93	.99	.95	.91	.94	.91	.88	.90	.87	.84	.86	.84	.81	.79
2.0	.88	.81	.75	.86	.80	.74	.82	.77	.72	.78	.74	.70	.75	.71	.68	.65
3.0	.77	.69	.62	.76	.68	.61	.72	.65	.60	.69	.63	.59	.66	.61	.57	.55
4.0	.68	.59	.52	.67	.58	.52	.64	.57	.51	.61	.55	.50	.59	.53	.49	.47
5.0	.61	.52	.45	.60	.51	.45	.57	.50	.44	.55	.48	.43	.53	.47	.42	.40
6.0	.55	.46	.39	.54	.45	.39	.52	.44	.38	.50	.43	.38	.48	.42	.37	.35
7.0	.50	.41	.34	.49	.40	.34	.47	.39	.34	.45	.38	.33	.44	.37	.33	.31
8.0	.45	.37	.31	.44	.36	.30	.43	.35	.30	.41	.35	.30	.40	.34	.29	.27
9.0	.41	.33	.27	.41	.33	.27	.39	.32	.27	.38	.31	.27	.37	.31	.26	.25
10.0	.38	.30	.25	.37	.30	.25	.36	.29	.24	.35	.29	.24	.34	.28	.24	.22



C Range: 0 - 360DEG
C Interval: 22.5DEG
Test Speed: HIGH
Temperature:25.3DEG
Operators:01
Test Date:2023-08-20

γ Range: 0 - 180DEG
γ Interval: 1.0DEG
Test System:EVERFINE GO-2000A_V1 SYSTEM V2.0.354
Humidity:65.0%
Test Distance:9.137m [K=1.0000]
Remarks:

WEC AND CCEC

Test:U:230.0V I:0.2355A P:48.23W PF:0.8903 Freq:49.99Hz Lamp Flux:7010.45x1 lm		
NAME: LED Waterproof Luminaire	TYPE:Trent III-5FT-48W-CCT-4000K	WEIGHT:
SPEC.:48W	DIM.: 1570*99*82mm	SERIAL No.:
MFR.: Kosnic	SUR.:1570*99mm	Shielding Angle:

pcc	80%			70%			50%			30%			10%			0	
pw	50%	30%	10%	50%	30%	10%	50%	30%	10%	50%	30%	10%	50%	30%	10%	0	
pfc	20%			20%			20%			20%			20%			0	
RCR	RCR:Room Cavity Ratio						Wall Exitance Coefficients(WEC)										
0.0																	
1.0	.337	.191	.061	.329	.187	.060	.313	.180	.057	.300	.173	.055	.287	.166	.054		
2.0	.305	.167	.051	.298	.164	.051	.285	.158	.049	.273	.153	.048	.261	.148	.047		
3.0	.278	.148	.044	.272	.146	.044	.260	.141	.043	.249	.136	.042	.239	.132	.041		
4.0	.255	.132	.039	.249	.130	.039	.238	.126	.038	.229	.123	.037	.220	.119	.036		
5.0	.234	.119	.035	.229	.118	.034	.220	.114	.034	.211	.111	.033	.203	.108	.033		
6.0	.217	.109	.031	.212	.107	.031	.204	.104	.030	.196	.102	.030	.188	.099	.029		
7.0	.201	.099	.028	.197	.098	.028	.190	.096	.028	.182	.094	.027	.176	.091	.027		
8.0	.188	.092	.026	.184	.091	.026	.177	.089	.025	.171	.087	.025	.165	.085	.025		
9.0	.176	.085	.024	.172	.084	.024	.166	.082	.023	.160	.080	.023	.155	.079	.023		
10.0	.165	.079	.022	.162	.078	.022	.156	.077	.022	.151	.075	.021	.146	.074	.021		

pcc	80%			70%			50%			30%			10%			0
pw	50%	30%	10%	50%	30%	10%	50%	30%	10%	50%	30%	10%	50%	30%	10%	0
pfc	20%			20%			20%			20%			20%			0
RCR	RCR:Room Cavity Ratio						Ceiling Cavity Exitance Coefficients(CCEC)									
0.0	.212	.212	.212	.181	.181	.181	.124	.124	.124	.071	.071	.071	.023	.023	.023	
1.0	.204	.178	.154	.175	.153	.133	.119	.105	.092	.069	.061	.053	.022	.020	.017	
2.0	.196	.154	.118	.168	.132	.102	.115	.092	.071	.066	.053	.042	.021	.017	.014	
3.0	.188	.137	.095	.161	.118	.083	.111	.082	.058	.064	.048	.034	.021	.016	.011	
4.0	.180	.123	.080	.155	.107	.069	.106	.074	.049	.062	.044	.029	.020	.014	.009	
5.0	.173	.113	.069	.149	.098	.060	.102	.068	.042	.059	.040	.025	.019	.013	.008	
6.0	.166	.105	.061	.142	.091	.053	.098	.064	.038	.057	.037	.022	.018	.012	.007	
7.0	.159	.098	.055	.137	.085	.048	.094	.060	.034	.055	.035	.020	.018	.011	.007	
8.0	.152	.092	.051	.131	.080	.044	.091	.056	.032	.053	.033	.019	.017	.011	.006	
9.0	.146	.087	.048	.126	.076	.041	.087	.053	.029	.051	.031	.018	.016	.010	.006	
10.0	.140	.083	.045	.121	.072	.039	.084	.051	.028	.049	.030	.017	.016	.010	.006	

C Range: 0 - 360DEG
C Interval: 22.5DEG
Test Speed: HIGH
Temperature:25.3DEG
Operators:01
Test Date:2023-08-20

γ Range: 0 - 180DEG
γ Interval: 1.0DEG
Test System:EVERFINE GO-2000A_V1 SYSTEM V2.0.354
Humidity:65.0%
Test Distance:9.137m [K=1.0000]
Remarks:

UGR(Unified Glare Rating) Table

Test:U:230.0V I:0.2355A P:48.23W PF:0.8903 Freq:49.99Hz Lamp Flux:7010.45x1 lm											
NAME: LED Waterproof Luminaire					TYPE:Trent III-5FT-48W-CCT-4000K			WEIGHT:			
SPEC.:48W					DIM.: 1570*99*82mm			SERIAL No.:			
MFR.: Kosnic					SUR.:1570*99mm			Shielding Angle:			
ceiling/cavity	0.7	0.7	0.5	0.5	0.3	0.7	0.7	0.5	0.5	0.3	
walls	0.5	0.3	0.5	0.3	0.3	0.5	0.3	0.5	0.3	0.3	
working plane	0.2	0.2	0.2	0.2	0.2	0.2	0.2	0.2	0.2	0.2	
Room dimensions		Viewed crosswise					Viewed endwise				
x = 2H y = 2H		15.3	16.8	15.6	17.0	17.3	14.7	16.2	15.0	16.4	16.7
3H		16.7	18.1	17.1	18.4	18.7	15.9	17.3	16.3	17.6	17.9
4H		17.6	18.9	18.0	19.2	19.6	16.4	17.7	16.7	18.0	18.3
6H		18.8	20.0	19.2	20.4	20.7	16.7	17.9	17.1	18.3	18.6
8H		19.4	20.6	19.8	21.0	21.3	16.8	18.0	17.2	18.3	18.7
12H		20.1	21.2	20.5	21.6	22.0	16.8	18.0	17.2	18.3	18.7
4H 2H		15.8	17.2	16.2	17.5	17.8	15.4	16.7	15.7	17.0	17.3
3H		17.5	18.7	17.9	19.0	19.4	16.9	18.1	17.3	18.4	18.8
4H		18.6	19.7	19.0	20.0	20.4	17.6	18.6	18.0	19.0	19.4
6H		20.0	20.9	20.4	21.4	21.8	18.1	19.0	18.5	19.4	19.8
8H		20.8	21.7	21.2	22.1	22.5	18.2	19.1	18.7	19.5	20.0
12H		21.5	22.4	22.0	22.8	23.3	18.3	19.1	18.8	19.6	20.0
8H 4H		18.9	19.8	19.4	20.2	20.7	18.0	18.9	18.5	19.4	19.8
6H		20.6	21.4	21.1	21.8	22.3	18.8	19.6	19.3	20.0	20.5
8H		21.6	22.3	22.1	22.7	23.3	19.2	19.8	19.7	20.3	20.8
12H		22.6	23.2	23.1	23.7	24.2	19.4	20.0	19.9	20.5	21.0
12H 4H		19.0	19.8	19.4	20.2	20.7	18.2	19.0	18.6	19.4	19.9
6H		20.7	21.4	21.2	21.9	22.4	19.1	19.7	19.6	20.2	20.7
8H		21.8	22.4	22.3	22.9	23.4	19.5	20.1	20.1	20.6	21.2
Variations with the observer position at spacings:											
S = 1.0H		+ 0.1 / - 0.2					+ 0.2 / - 0.3				
1.5H		+ 0.2 / - 0.3					+ 0.3 / - 0.5				
2.0H		+ 0.2 / - 0.3					+ 0.3 / - 0.7				

CIE Pub.117, 7010 lm Total Lamp Luminous Flux Correct ($8\log(F/F_0) = 6.8$)

C Range: 0 - 360DEG
C Interval: 22.5DEG
Test Speed: HIGH
Temperature:25.3DEG
Operators:01
Test Date:2023-08-20

γ Range: 0 - 180DEG
 γ Interval: 1.0DEG
Test System:EVERFINE GO-2000A_V1 SYSTEM V2.0.354
Humidity:65.0%
Test Distance:9.137m [K=1.0000]
Remarks:

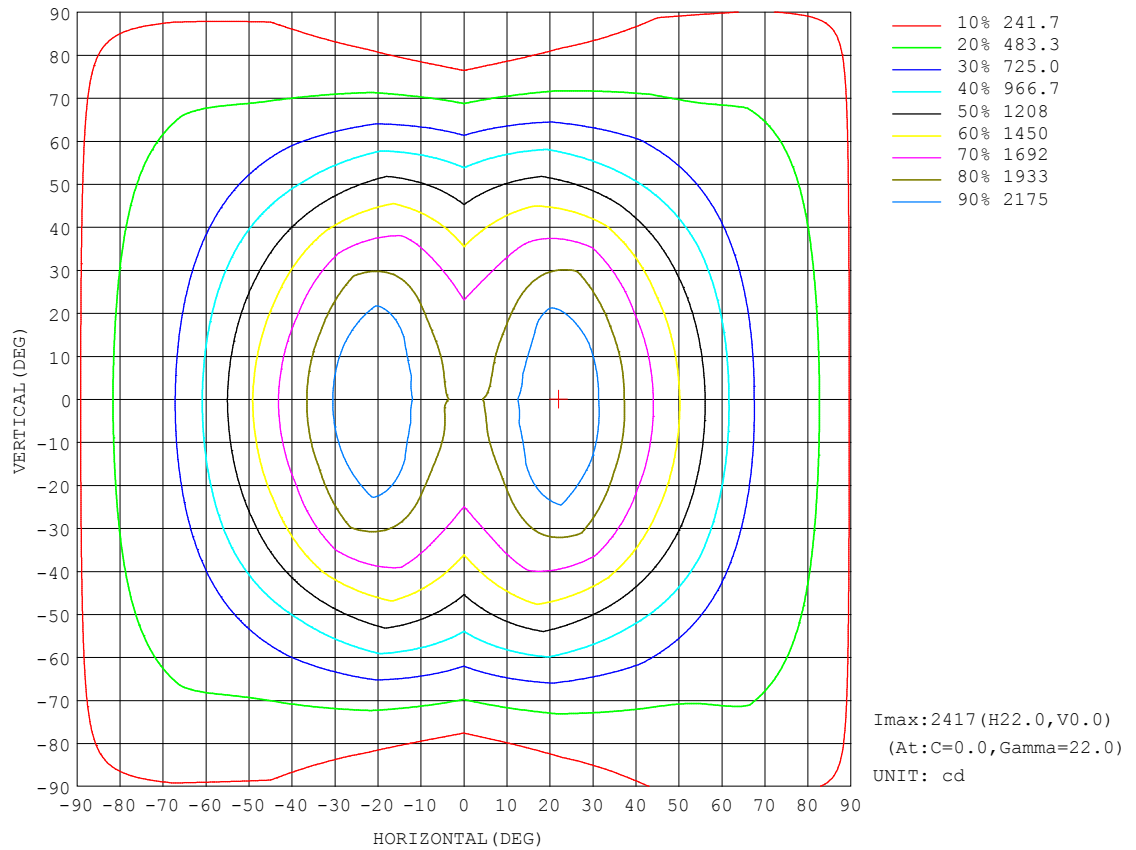
```

γ Range: 0 - 180DEG
γ Interval: 1.0DEG
Test System:EVERFINE GO-2000A_V1 SYSTEM V2.0.354
Humidity:65.0%
Test Distance:9.137m [K=1.0000]
Remarks:

```

ISOCANDELA DIAGRAM

Test:U:230.0V I:0.2355A P:48.23W PF:0.8903 Freq:49.99Hz Lamp Flux:7010.45x1 lm		
NAME: LED Waterproof Luminaire	TYPE:Trent III-5FT-48W-CCT-4000K	HEIGHT:
SPEC.:48W	DIM.: 1570*99*82mm	SERIAL No.:
MFR.: Kosnic	SUR.:1570*99mm	Shielding Angle:

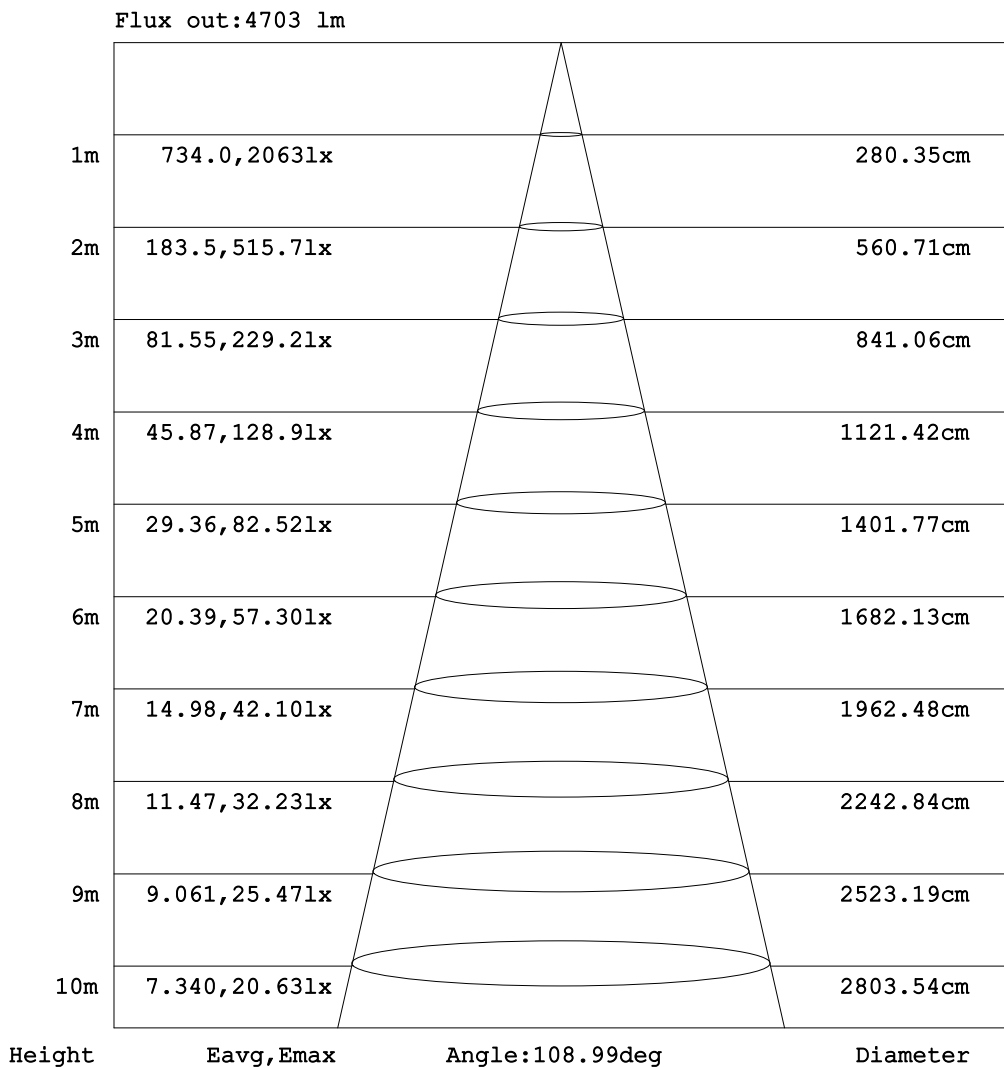


C Range: 0 - 360DEG
C Interval: 22.5DEG
Test Speed: HIGH
Temperature:25.3DEG
Operators:01
Test Date:2023-08-20

γ Range: 0 - 180DEG
γ Interval: 1.0DEG
Test System:EVERFINE GO-2000A_V1 SYSTEM V2.0.354
Humidity:65.0%
Test Distance:9.137m [K=1.0000]
Remarks:

AAI Figure

Test:U:230.0V I:0.2355A P:48.23W PF:0.8903 Freq:49.99Hz Lamp Flux:7010.45x1 lm		
NAME: LED Waterproof Luminaire	TYPE:Trent III-5FT-48W-CCT-4000K	HEIGHT:
SPEC.:48W	DIM.: 1570*99*82mm	SERIAL No.:
MFR.: Kosnic	SUR.:1570*99mm	Shielding Angle:



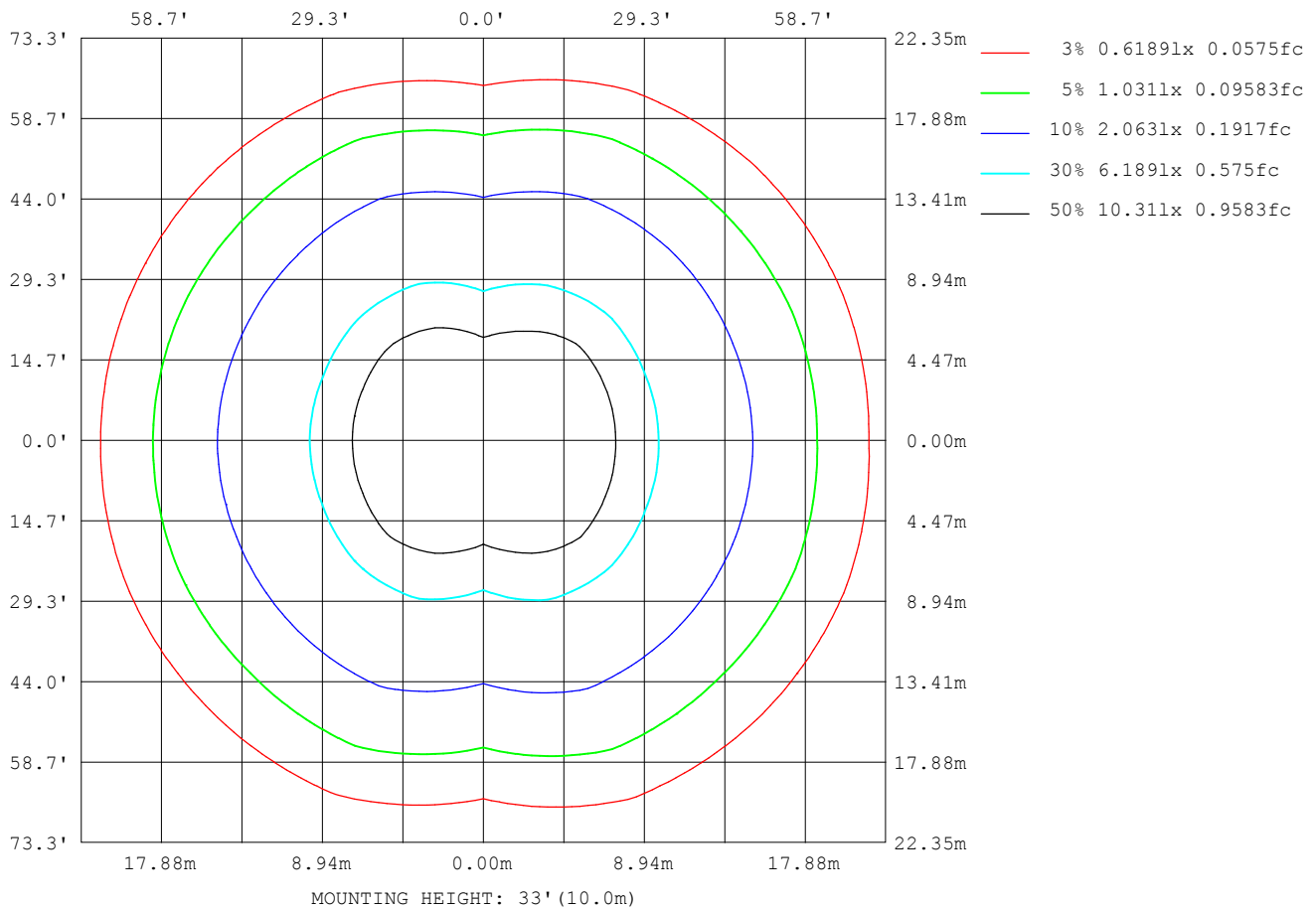
Note: The Curves indicate the illuminated area and the average illumination when the luminaire is at different distance.

C Range: 0 - 360DEG
C Interval: 22.5DEG
Test Speed: HIGH
Temperature: 25.3DEG
Operators: 01
Test Date: 2023-08-20

γ Range: 0 - 180DEG
γ Interval: 1.0DEG
Test System: EVERFINE GO-2000A_V1 SYSTEM V2.0.354
Humidity: 65.0%
Test Distance: 9.137m [K=1.0000]
Remarks:

ISOLUX DIAGRAM

Test:U:230.0V I:0.2355A P:48.23W PF:0.8903 Freq:49.99Hz Lamp Flux:7010.45x1 lm		
NAME: LED Waterproof Luminaire	TYPE:Trent III-5FT-48W-CCT-4000K	HEIGHT:
SPEC.:48W	DIM.: 1570*99*82mm	SERIAL No.:
MFR.: Kosnic	SUR.:1570*99mm	Shielding Angle:



C Range: 0 - 360DEG
C Interval: 22.5DEG
Test Speed: HIGH
Temperature:25.3DEG
Operators:01
Test Date:2023-08-20

γ Range: 0 - 180DEG
γ Interval: 1.0DEG
Test System:EVERFINE GO-2000A_V1 SYSTEM V2.0.354
Humidity:65.0%
Test Distance:9.137m [K=1.0000]
Remarks:

LED Avg.L Report

Test:U:230.0V I:0.2355A P:48.23W PF:0.8903 Freq:49.99Hz Lamp Flux:7010.45x1 lm		
NAME: LED Waterproof Luminaire	TYPE:Trent III-5FT-48W-CCT-4000K	HEIGHT:
SPEC.:48W	DIM.: 1570*99*82mm	SERIAL No.:
MFR.: Kosnic	SUR.:1570*99mm	Shielding Angle:

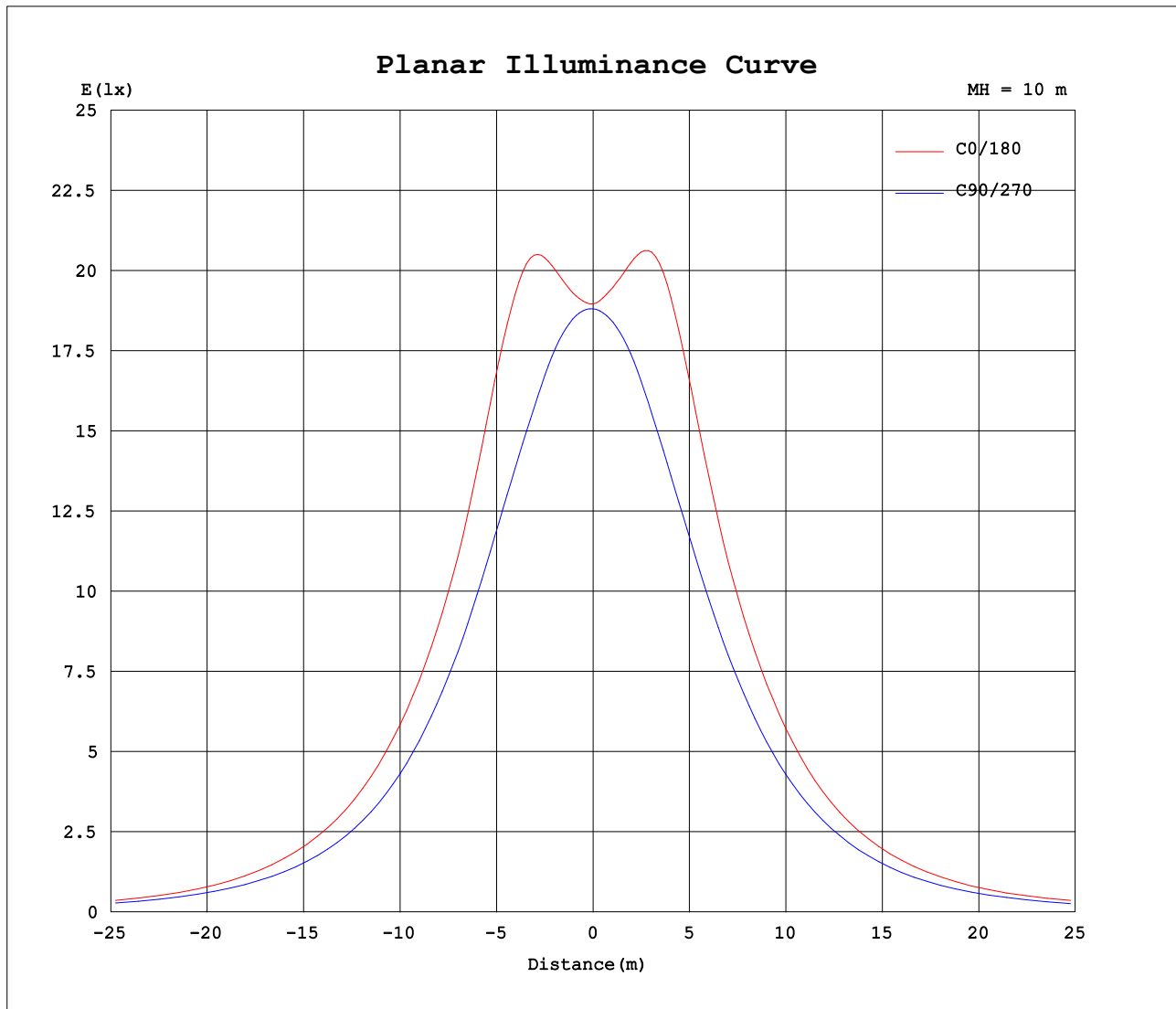
AvgL	cd/m2
L_0~180 (65) av	12181
L_0~180 (75) av	15186
L_0~180 (85) av	28350
L_90~270 (65) av	9446
L_90~270 (75) av	7529
L_90~270 (85) av	3382
L_45 (65) av	12437
L_45 (75) av	12715
L_45 (85) av	23178

Standard: GB/T 29293-2012

C Range: 0 - 360DEG
C Interval: 22.5DEG
Test Speed: HIGH
Temperature:25.3DEG
Operators:01
Test Date:2023-08-20

γ Range: 0 - 180DEG
γ Interval: 1.0DEG
Test System:EVERFINE GO-2000A_V1 SYSTEM V2.0.354
Humidity:65.0%
Test Distance:9.137m [K=1.0000]
Remarks:

Planar Illuminance Curve



C Range: 0 - 360DEG
C Interval: 22.5DEG
Test Speed: HIGH
Temperature: 25.3DEG
Operators: 01
Test Date: 2023-08-20

γ Range: 0 - 180DEG
 γ Interval: 1.0DEG
Test System: EVERFINE GO-2000A_V1 SYSTEM V2.0.354
Humidity: 65.0%
Test Distance: 9.137m [K=1.0000]
Remarks:

LUMINOUS DISTRIBUTION INTENSITY DATA

Test:U:230.0V I:0.2355A P:48.23W PF:0.8903 Freq:49.99Hz Lamp Flux:7010.45x1 lm		
NAME: LED Waterproof Luminaire	TYPE:Trent III-5FT-48W-CCT-4000K	WEIGHT:
SPEC.:48W	DIM.: 1570*99*82mm	SERIAL No.:
MFR.: Kosnic	SUR.:1570*99mm	Shielding Angle:

Table--1

UNIT: cd

C (DEG) γ (DEG)	0	22.5	45	67.5	90	112.5	135	157.5	180	202.5	225	247.5	270	292.5	315	337.5			
0	1883	1883	1883	1883	1883	1883	1883	1883	1883	1883	1883	1883	1883	1883	1883	1883			
5	1930	1924	1906	1887	1884	1899	1924	1943	1946	1937	1915	1890	1874	1876	1894	1916			
10	2065	2042	1968	1895	1867	1915	1999	2072	2088	2064	1988	1903	1852	1874	1946	2025			
15	2256	2207	2058	1892	1823	1917	2093	2236	2273	2227	2082	1906	1803	1863	2024	2188			
20	2389	2352	2163	1883	1763	1910	2188	2355	2387	2343	2175	1900	1737	1843	2117	2330			
25	2372	2372	2236	1877	1694	1901	2238	2342	2341	2322	2218	1892	1664	1824	2184	2347			
30	2215	2265	2223	1857	1596	1872	2199	2210	2179	2183	2164	1863	1571	1794	2170	2240			
35	2005	2064	2125	1815	1480	1817	2077	2016	1978	1987	2028	1802	1462	1741	2068	2044			
40	1822	1862	1954	1736	1358	1727	1901	1816	1795	1787	1841	1698	1346	1654	1898	1840			
45	1644	1672	1740	1613	1223	1595	1686	1621	1609	1589	1628	1546	1216	1522	1692	1644			
50	1448	1468	1513	1450	1082	1424	1456	1409	1404	1377	1398	1366	1079	1357	1468	1437			
55	1244	1259	1272	1256	938	1227	1217	1200	1201	1171	1163	1166	930	1170	1227	1231			
60	1033	1065	1041	1047	789	1017	992	1009	997	981	953	955	769	971	1003	1039			
65	810	859	855	834	635	806	809	816	790	787	781	753	606	772	823	837			
70	657	670	691	634	478	610	651	649	658	633	625	570	442	584	666	656			
75	609	569	533	464	321	442	507	563	613	561	489	412	284	423	517	557			
80	553	525	410	326	174	305	396	499	528	488	390	284	141	291	399	502			
85	400	420	331	216	56.3	196	311	373	368	354	303	182	35.4	185	310	394			
90	228	267	252	132	7.08	116	225	235	218	219	212	110	5.79	110	226	246			
95	138	154	163	73.5	6.68	60.9	144	143	138	137	135	62.4	4.22	61.6	147	144			
100	98.3	104	99.3	40.0	6.21	32.3	89.3	98.9	99.3	96.2	86.3	28.5	3.94	31.7	91.6	98.5			
105	73.0	75.4	64.2	22.1	6.27	16.8	57.8	71.5	73.2	70.0	56.6	14.9	4.87	14.1	59.5	71.6			
110	55.9	56.0	43.5	11.6	6.38	8.32	38.4	52.9	55.8	52.0	36.9	7.74	5.44	7.05	38.9	53.5			
115	43.5	42.4	29.7	8.43	5.64	7.93	25.3	39.9	43.4	39.5	24.9	7.74	5.71	7.00	23.8	40.3			
120	34.0	32.1	20.4	8.84	6.41	8.32	17.1	30.2	33.9	30.1	16.4	7.84	5.94	7.18	15.4	30.5			
125	0.00	0.00	0.00	0.00	0.00	0.00	0.00	0.00	0.00	0.00	0.00	0.00	0.00	0.00	0.00	0.00			
130	0.00	0.00	0.00	0.00	0.00	0.00	0.00	0.00	0.00	0.00	0.00	0.00	0.00	0.00	0.00	0.00			
135	0.00	0.00	0.00	0.00	0.00	0.00	0.00	0.00	0.00	0.00	0.00	0.00	0.00	0.00	0.00	0.00			
140	0.00	0.00	0.00	0.00	0.00	0.00	0.00	0.00	0.00	0.00	0.00	0.00	0.00	0.00	0.00	0.00			
145	0.00	0.00	0.00	0.00	0.00	0.00	0.00	0.00	0.00	0.00	0.00	0.00	0.00	0.00	0.00	0.00			
150	0.00	0.00	0.00	0.00	0.00	0.00	0.00	0.00	0.00	0.00	0.00	0.00	0.00	0.00	0.00	0.00			
155	0.00	0.00	0.00	0.00	0.00	0.00	0.00	0.00	0.00	0.00	0.00	0.00	0.00	0.00	0.00	0.00			
160	0.00	0.00	0.00	0.00	0.00	0.00	0.00	0.00	0.00	0.00	0.00	0.00	0.00	0.00	0.00	0.00			
165	0.00	0.00	0.00	0.00	0.00	0.00	0.00	0.00	0.00	0.00	0.00	0.00	0.00	0.00	0.00	0.00			
170	0.00	0.00	0.00	0.00	0.00	0.00	0.00	0.00	0.00	0.00	0.00	0.00	0.00	0.00	0.00	0.00			
175	0.00	0.00	0.00	0.00	0.00	0.00	0.00	0.00	0.00	0.00	0.00	0.00	0.00	0.00	0.00	0.00			
180	0.00	0.00	0.00	0.00	0.00	0.00	0.00	0.00	0.00	0.00	0.00	0.00	0.00	0.00	0.00	0.00			

C Range: 0 - 360DEG
C Interval: 22.5DEG
Test Speed: HIGH
Temperature:25.3DEG
Operators:01
Test Date:2023-08-20

γ Range: 0 - 180DEG
γ Interval: 1.0DEG
Test System:EVERFINE GO-2000A_V1 SYSTEM V2.0.354
Humidity:65.0%
Test Distance:9.137m [K=1.0000]
Remarks: